



CHEAPER TRAVEL

Are you travelling by boat?

For cheaper fares to the Island

Call Faresaver and quote MOO 41

0844937888

SEAFRONT FLATS FARESAVER



SEAFRONT FLATS



THE PERFECT PLACE
FOR A HOLIDAY



SEAFRONT FLATS



SEAFRONT FLATS

Promenade, Port Erin, Isle of Man

+44 (0)1624 835220

Email: Seafront@manx.net

www.seafrontflats.com



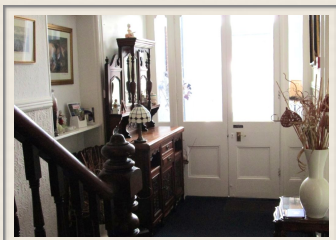


YOUR FACILITIES INCLUDE

- Free Wifi Throughout
- Digital Freeview TV
- Spacious Bedrooms
- Full size cooker, fridge & microwave
- Ironing Board & Iron
- Dining Table & Chairs
- All Bed linen
- Electric Heaters
- Coin operated tumble dryer

PLEASE BE AWARE

- Pets on request
- Parties not accepted
- No infants under 4 (babies welcome)
- No smoking
- No lift (please ensure your flat suits your legs)
- Deposit Required
- Electricity extra via a coin meter in flat
- Lowest prices are for one or two persons per week in low season



SEAFRONT FLATS

LOCATION, LOCATION, LOCATION

Located in an outstanding position with spectacular sea views from the front of the property, Seafront overlooks the golden sands of Port Erin bay and the beautiful Headland of Bradda Head.

SEAFRONT FLATS ROOMS & RATES

FROM £199- £490 PER FLAT PER WEEK.

At Seafront Flats we really are beside the seaside. Sitting on the bench outside Seafront, it's easy to unwind & enjoy the stunning scenery of Port Erin bay, or head down to the golden sandy beach where ice cream & afternoon tea awaits. The village shops and Port Erins' beautiful Rowany Golf Course are an easy & picturesque 3 minute walk away. With easy coastal walks and the beaches outside your front door there's no better place to be.

Seafront offers 3 sea view and 3 non sea view flats all of which are impeccably clean and at prices FROM £199 PER FLAT PER WEEK- are unbeatable on price!



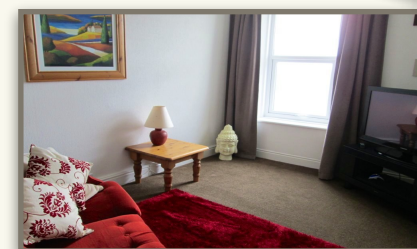
Spectacular View From Seafront



Non Sea-view Flat



Sea-view Flat



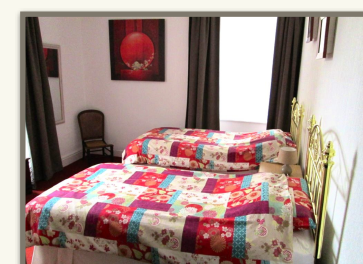
Sea-view Flat



Sea-view Flat



Sea-View Bedroom



Non Sea-view Bedroom